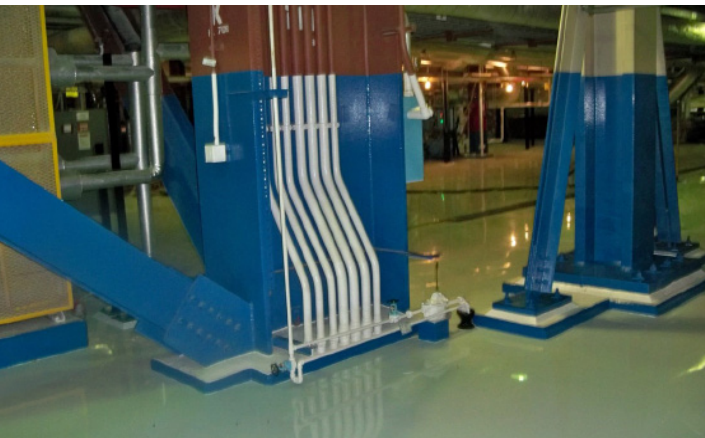
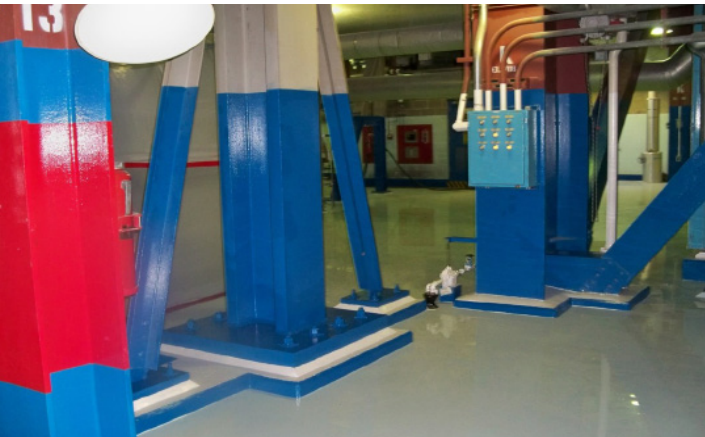


**Client:** Tennessee Valley Authority (TVA)  
**Location:** Watts Bar Unit 2  
**Project Duration:** 2009 - 2016  
**Project Value:** \$200MM +  
**Contract Method:** Cost with fee earned through performance



## Project Scope

Mechanical, electrical, I&C, scaffolding, coatings, insulation, valve refurbishment general laborer support, warehousing and commissioning.

## Project Description

- Williams began at the WBN 2 Construction project in 2009 as a subcontractor to Bechtel Power Corp performing coatings, insulation, and Thermolag.
- In 2011 Williams was awarded a construction support contract from TVA for scaffolding, warehousing, and craft support.
- From 2011 until project completion in 2016, Williams' scope continued to grow as we impressed the owner with our high productivity and low costs.
- Scope activities grew from a handful of specialty services in 2009 (coatings, insulation, Thermolag, etc.) to the substantial list as shown above by project completion in 2016, which ran the gamut from specialty to mechanical, to electrical, to start-up and testing support services.

## Challenges

- Safety was always of paramount importance due to the safety issues present at any major construction site. Williams overall safety performance on the job was excellent.
- Williams met the sometimes divergent requirements of 2 employers during the project with active contracts with both TVA and Bechtel Power Corp.
- Maintaining qualified craft in such large numbers is always a challenge, but Williams maintained excellent union relations which allowed us to continuously be able to provide qualified craft personnel during many periods of peak demand.

## Project Highlights

- Williams was recognized early on as a very productive and low cost vendor which resulted in our continued increase in scope activities.
- Williams was a major player supporting a utility in the completion of one of the most successful nuclear unit construction projects in the United States.
- Williams planned and closed out our own work documents relieving TVA of a large management burden.
- Williams supported the construction efforts with our own field engineering staff.